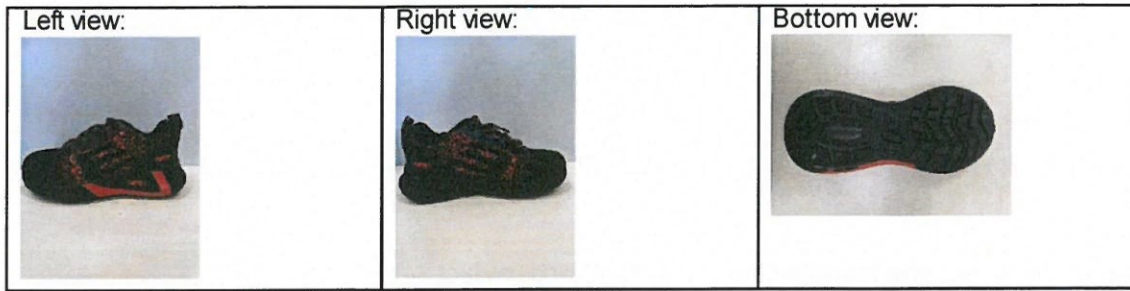
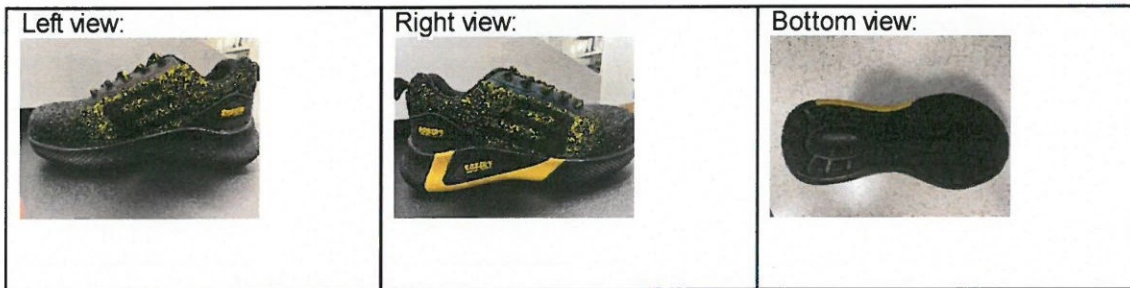


Orange



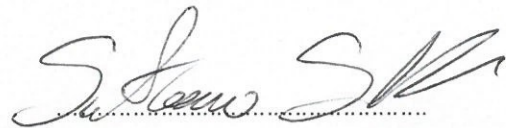
Yellow



Is in conformity with the essential requirements of EU PPE regulation 2016/425 and where such is the case, with the international harmonized standard EN ISO 20345:2022

The notified body TUV Rheinland LGA products GmbH(0197) performed the EU type-examination (Module B) and issue the EU type-examination certificate: BP 50590875 0001

On behalf of SILGE SRL



(signature and stamp of authorized person)

Date

14 LUGLIO 2023

SILGE s.r.l.
Via Vecchia Madonna dello Sterpeto, 27
76121 BARLETTA (BT)
Tel./Fax 0830.9863.886443
Partita IVA: 07090190723
e-mail: silgesrl@libero.it

EU-Declaration of conformity

Manufacture: SILGE SRL

Address: VIA V.M. DELLO STERPETO, 27 76121 BARLETTA (BT) ITALY

Declare under our sole responsibility that the following product

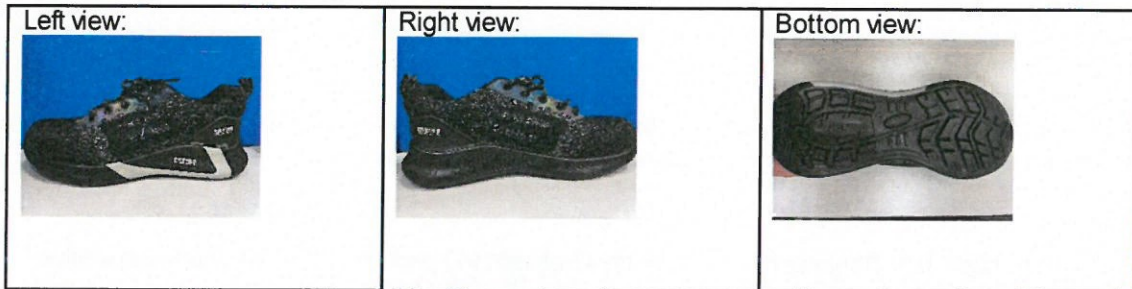
Type of Product: Safety Shoes

Type designation/model: BS170 Grey/Blue/Green/Orange/Yellow

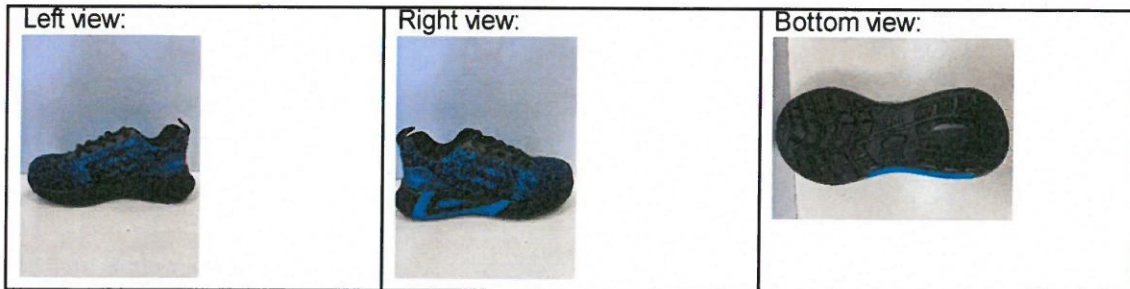
Batch or order number. /

Product Photo

Grey



Blue



Green

